

COMUNE DI TRIGGIANO

Città Metropolitana di Bari

LOTIZZAZIONE DELLA MAGLIA RICADENTE IN ZONA DI NUOVA ESPANSIONE "C4":
Maglia C4.1

COMPLESSO **IDEA**

TAVOLA : 9

DATA

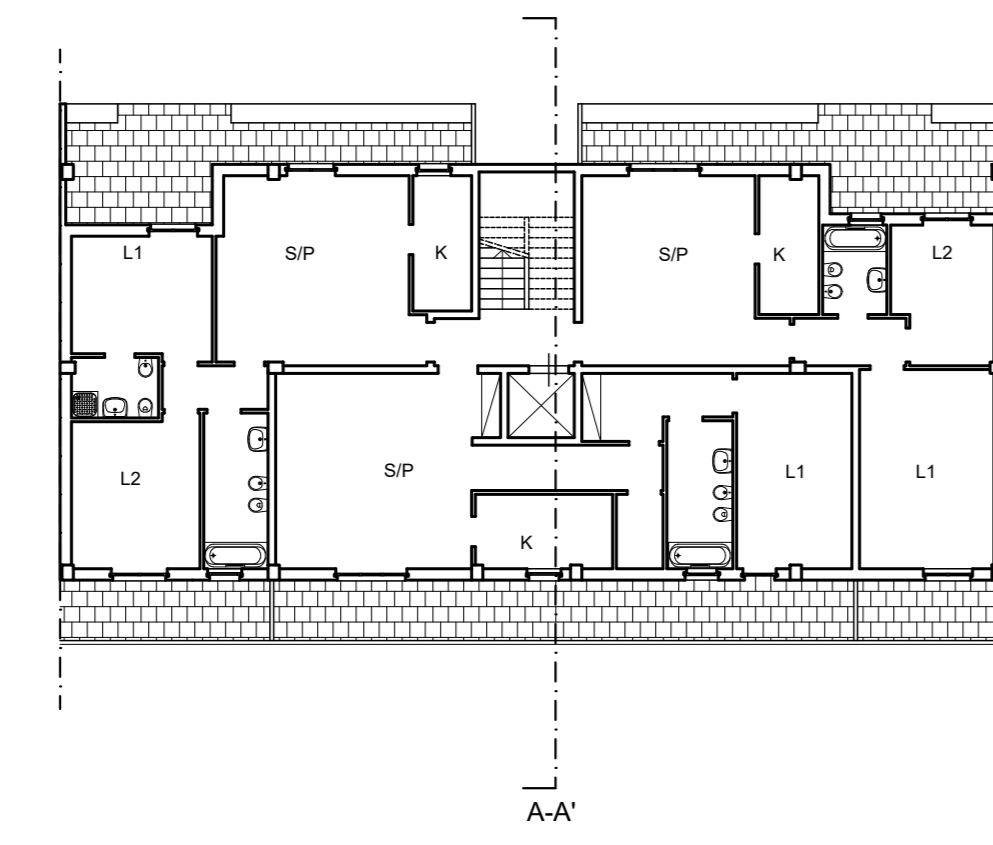
ottobre 2023
rev. marzo 2024

ELABORATO :

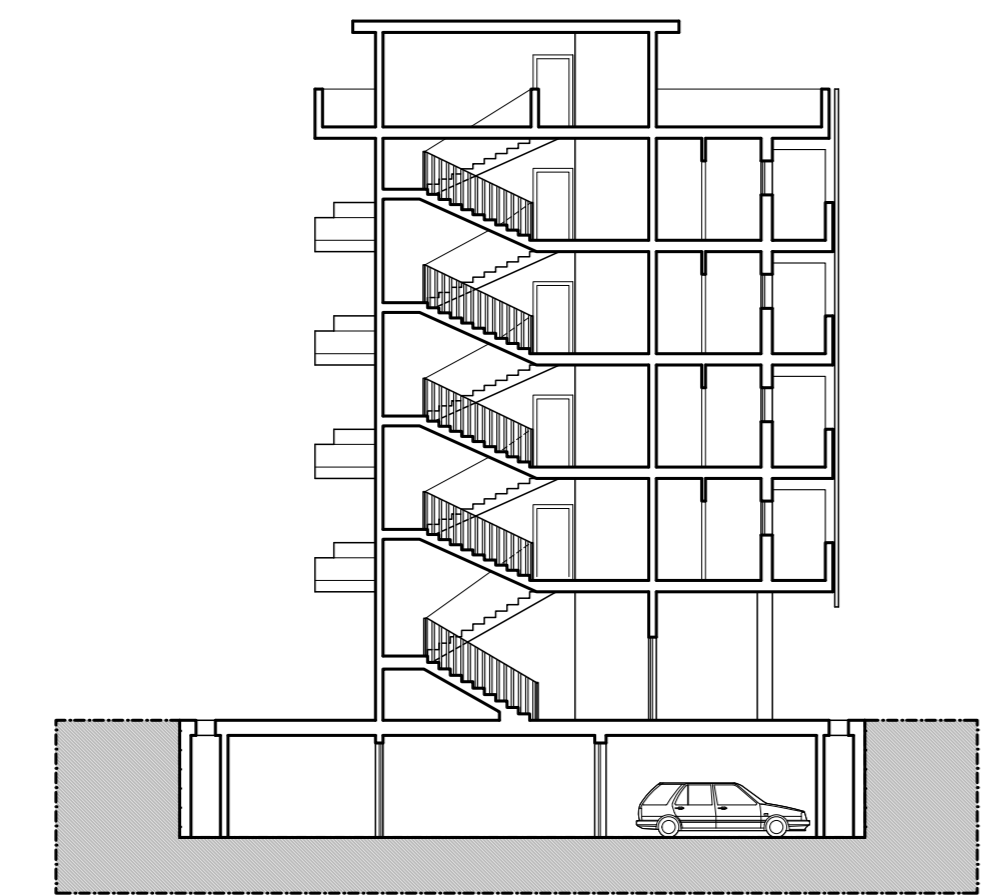
Tipologie edilizie 1:200
Schemi compositivi planimetrici 1:500
della sagoma di massimo ingombro

PROGETTISTI :
Ing. Geniario Carbonara
CARBONARA INGEGNERIA S.r.l.
arch. Mito Alessandro Di Donna
arch. Vito Fotini
Ing. Pietro Lombardi
Ing. Alfredo Magnanimo
arch. Valentina Masucci
Ing. Francesco Nelli
Ing. Giovanni Nelli
COMMITTENTI :

TIPOLOGIA "LINEA"
PIANTA DEL PIANO TIPO IPOTESI 3 UNITÀ ABITATIVE - rapp. 1:200

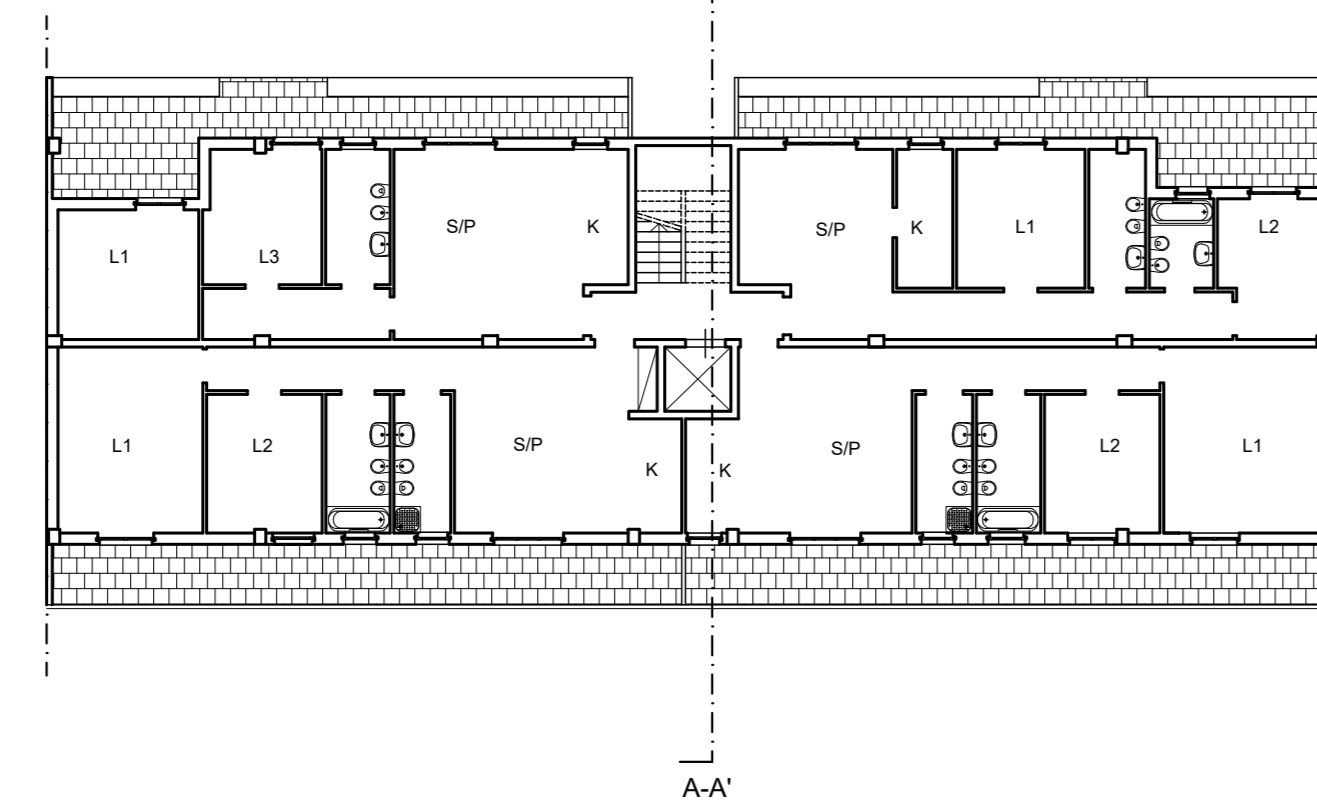


SUPERFICIE DI PIANO CIRCA 260 mq

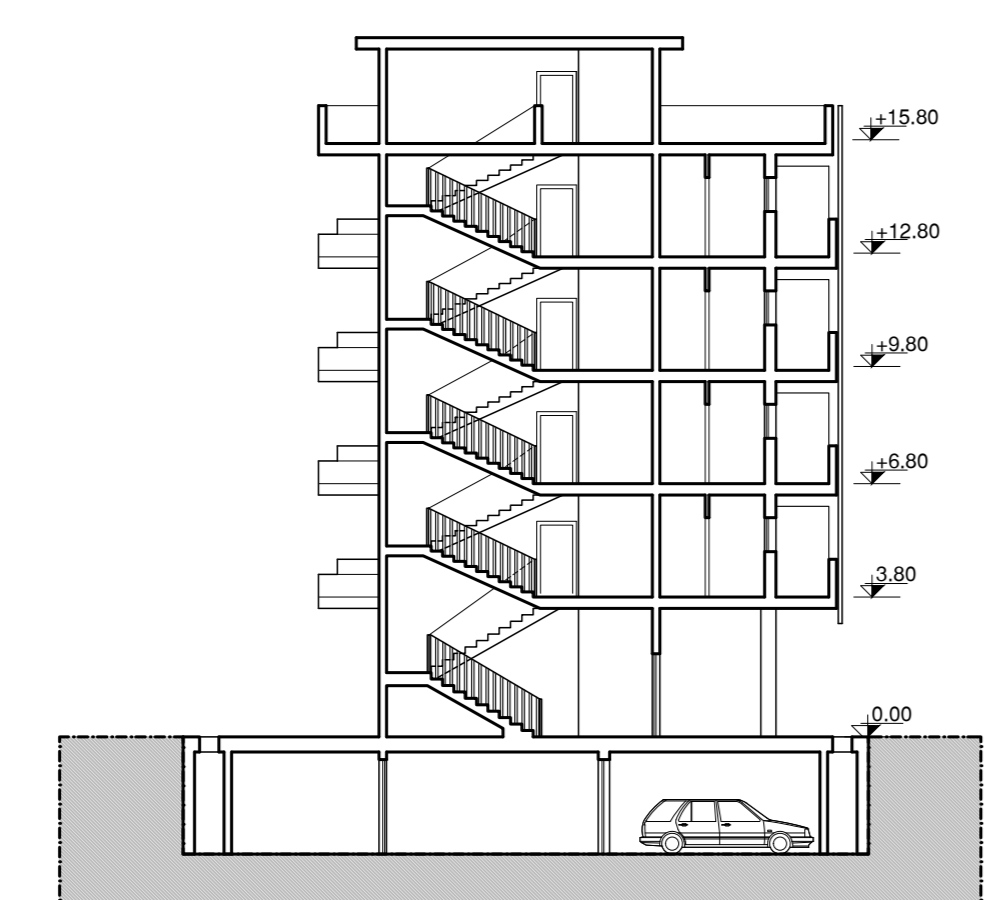


SEZIONE A-A'

TIPOLOGIA "LINEA"
PIANTA DEL PIANO TIPO - IPOTESI CON 4 UNITÀ ABITATIVE/PIANO - rapp. 1:200

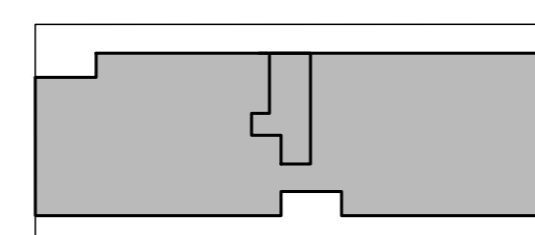
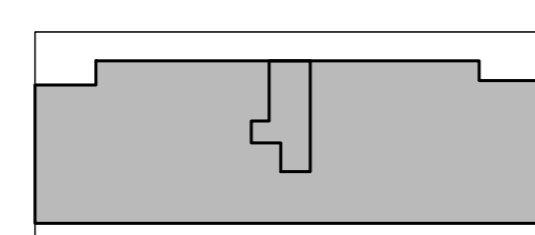
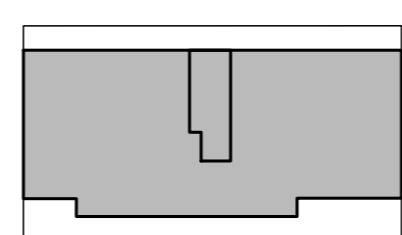
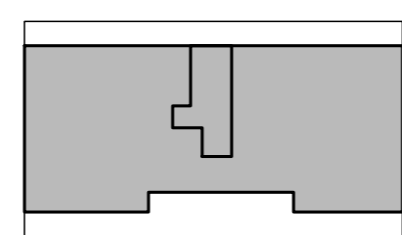
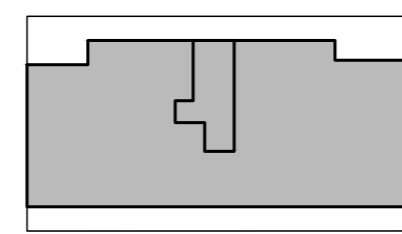
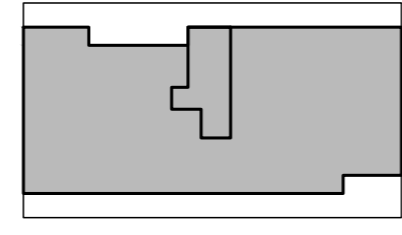
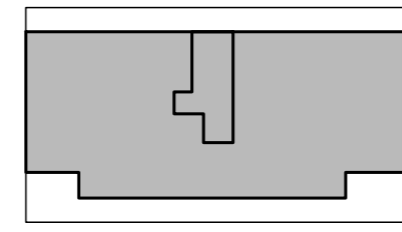


SUPERFICIE DI PIANO CIRCA 360 mq

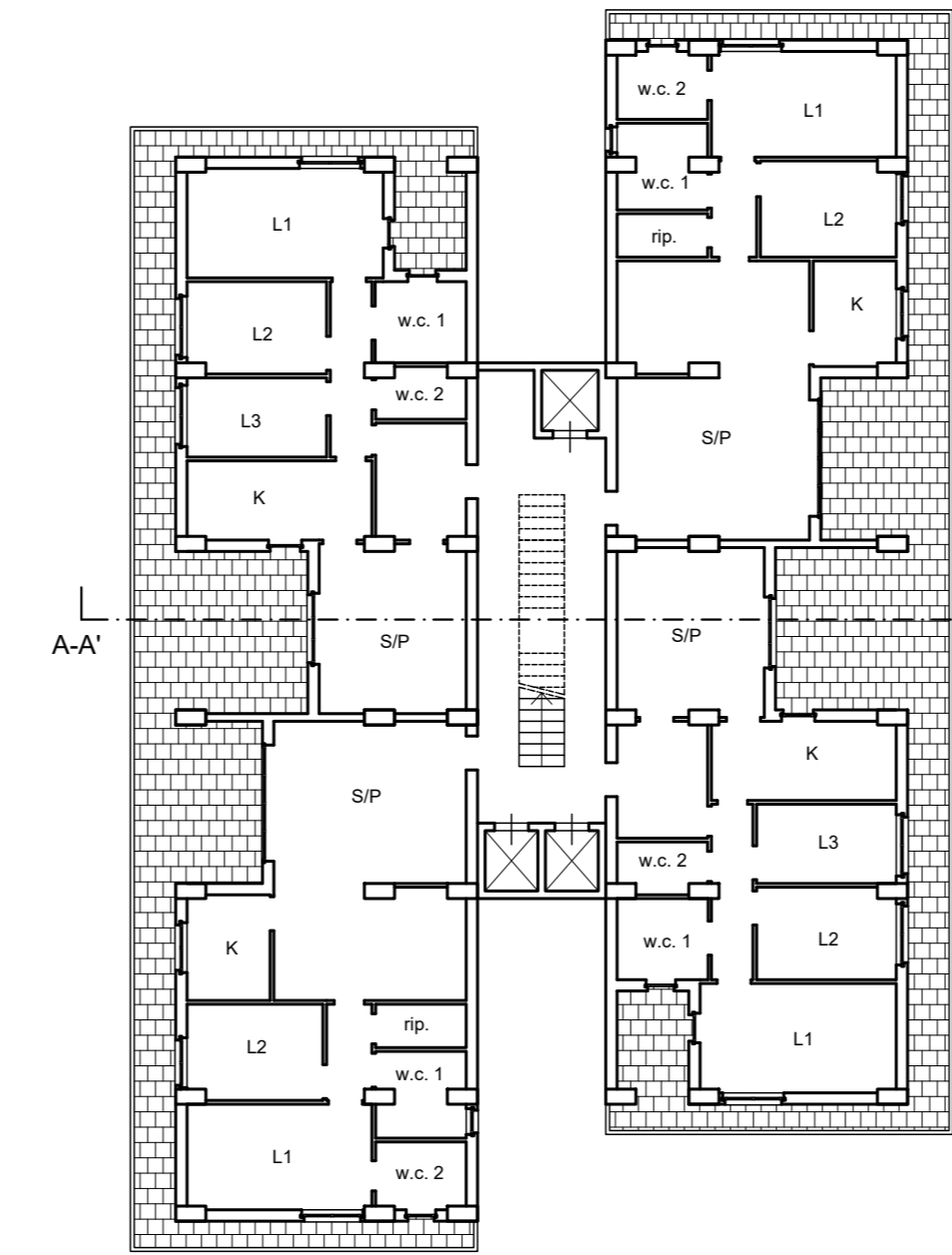


SEZIONE A-A'

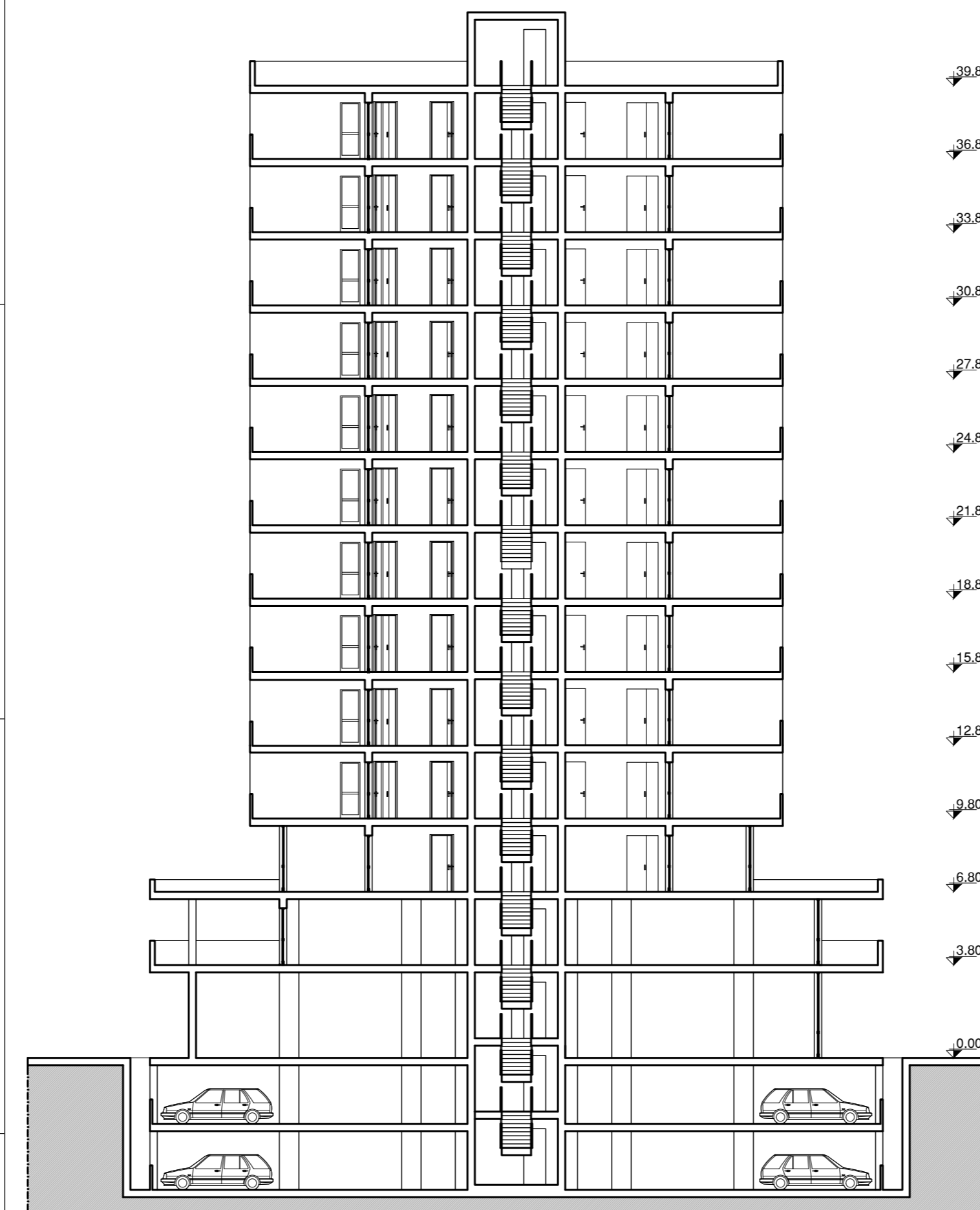
TIPOLOGIA "LINEA"
SCHEMI COMPOSITIVI PLANIMETRICI - rapp. 1:500



TIPOLOGIA "TORRE"
PIANTA DEL PIANO TIPO IPOTESI 4 UNITÀ ABITATIVE - rapp. 1:200

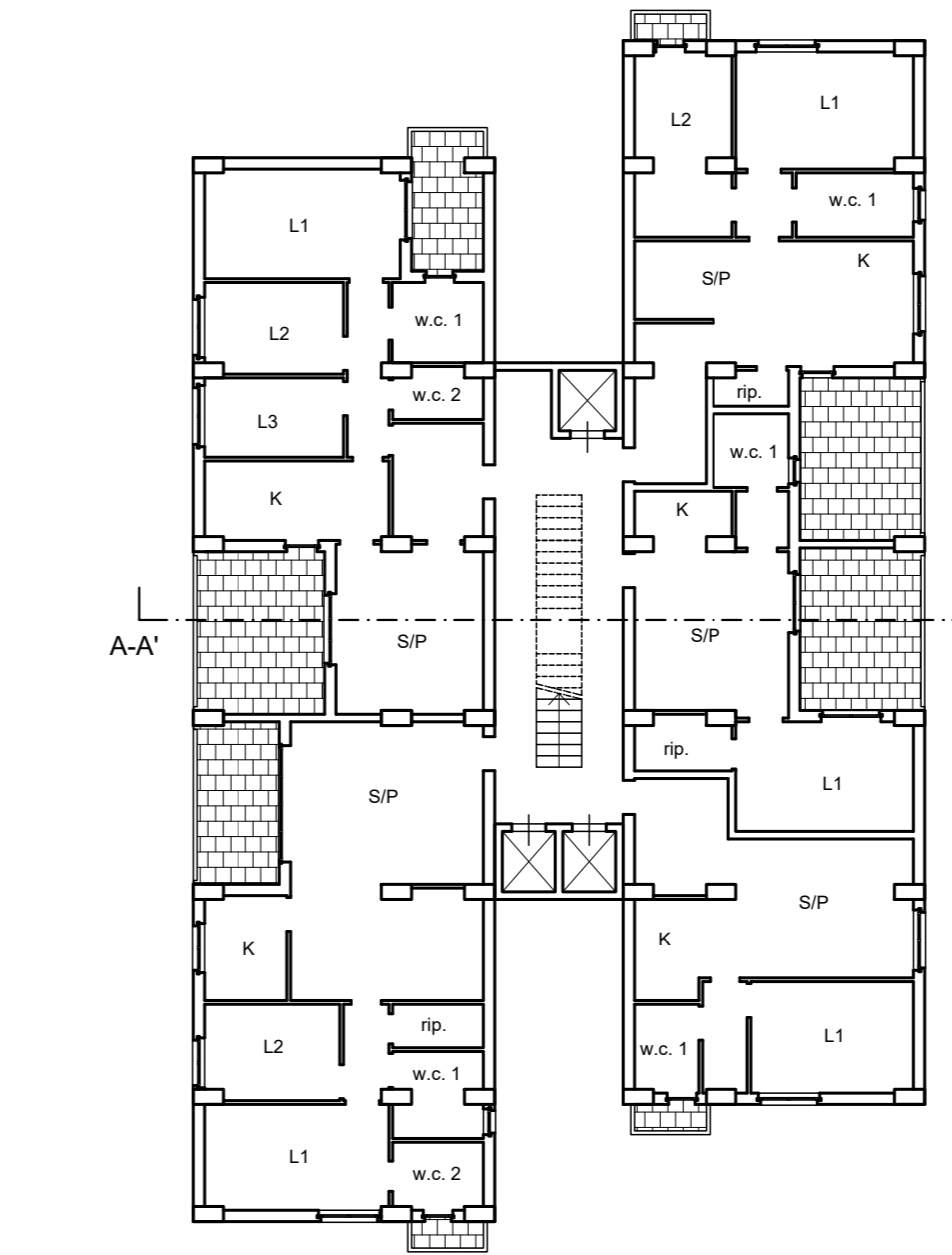


SUPERFICIE DI PIANO CIRCA 440 mq

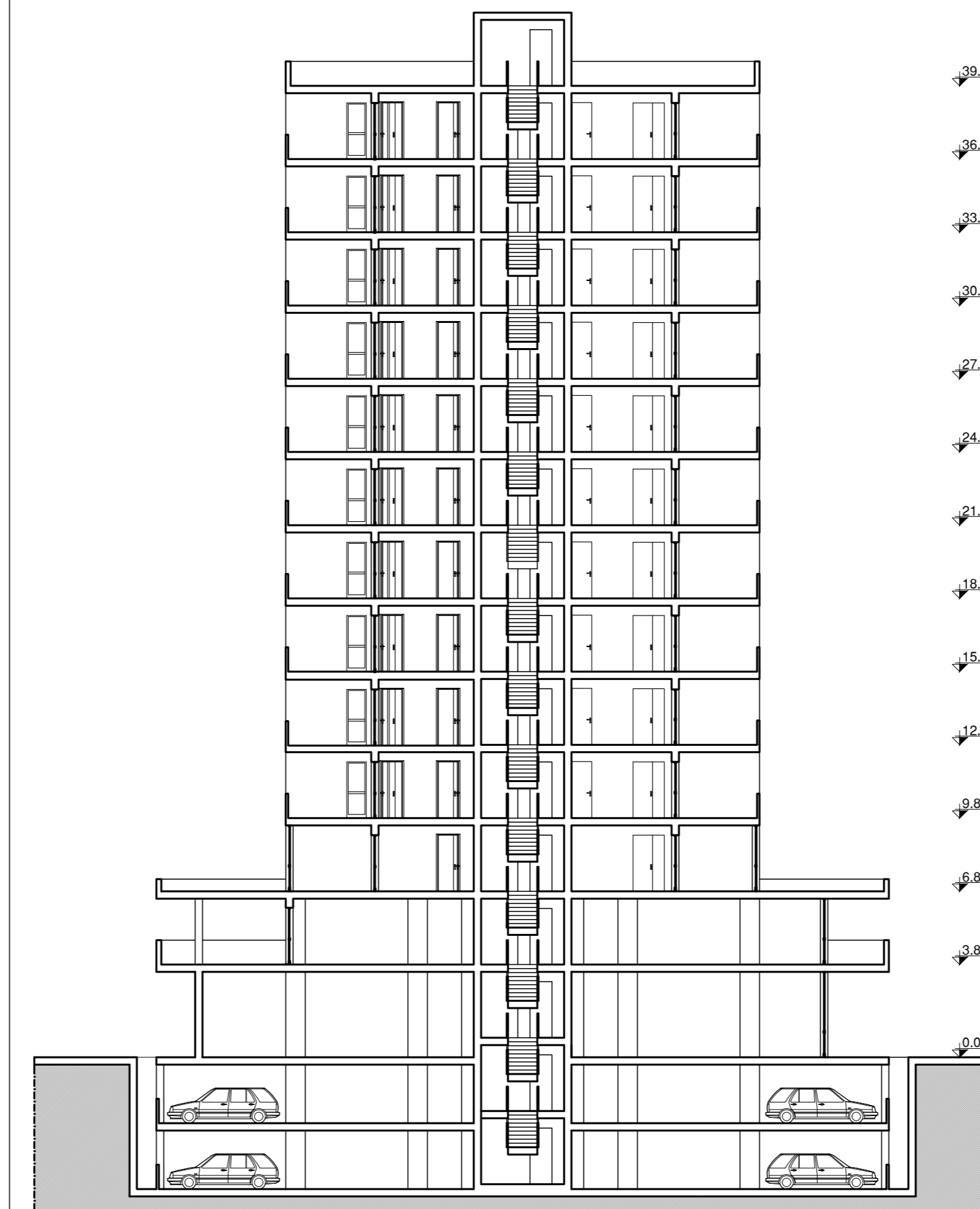


SEZIONE A-A'

TIPOLOGIA "TORRE"
PIANTA DEL PIANO TIPO IPOTESI 5 UNITÀ ABITATIVE - rapp. 1:200

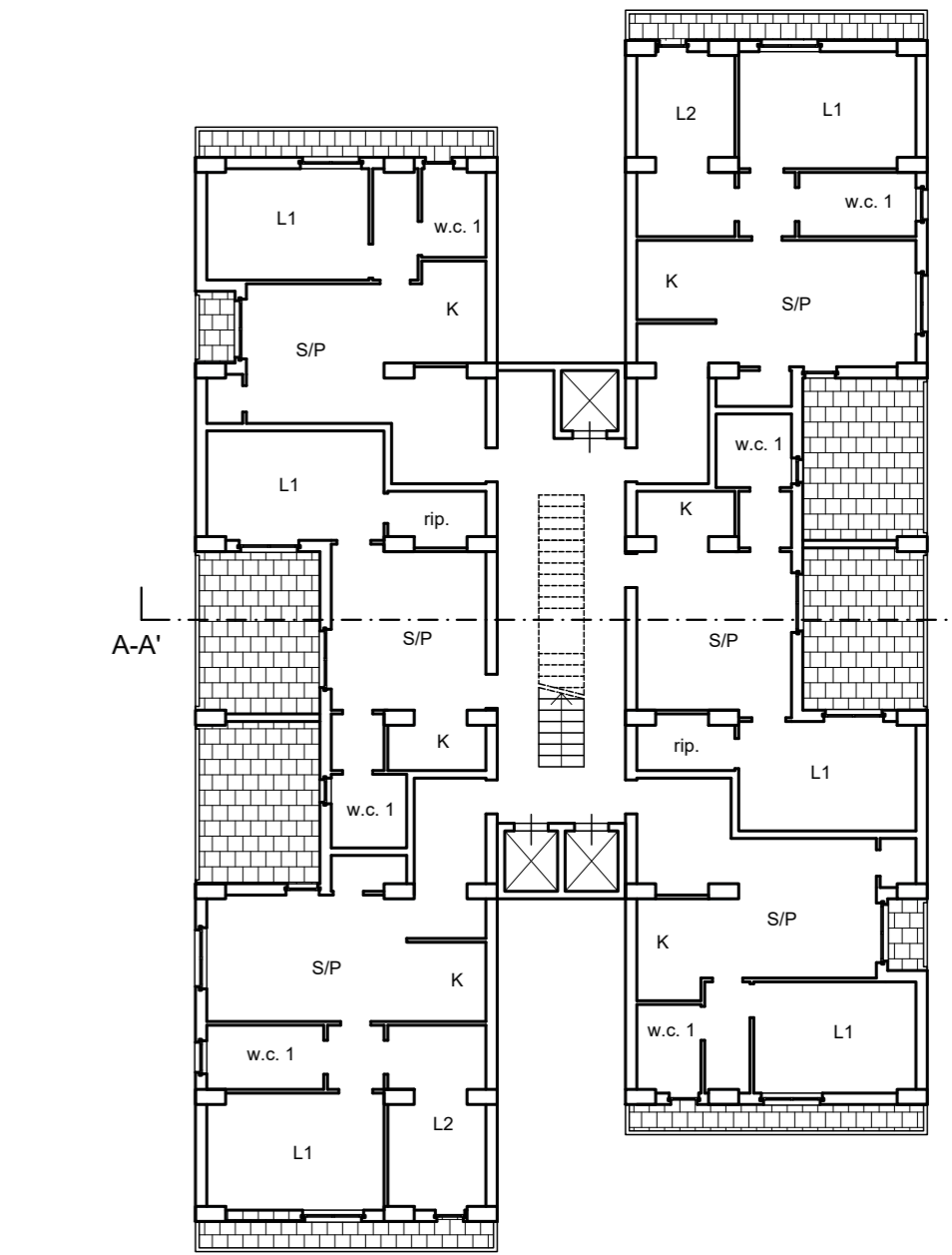


SUPERFICIE DI PIANO CIRCA 440 mq

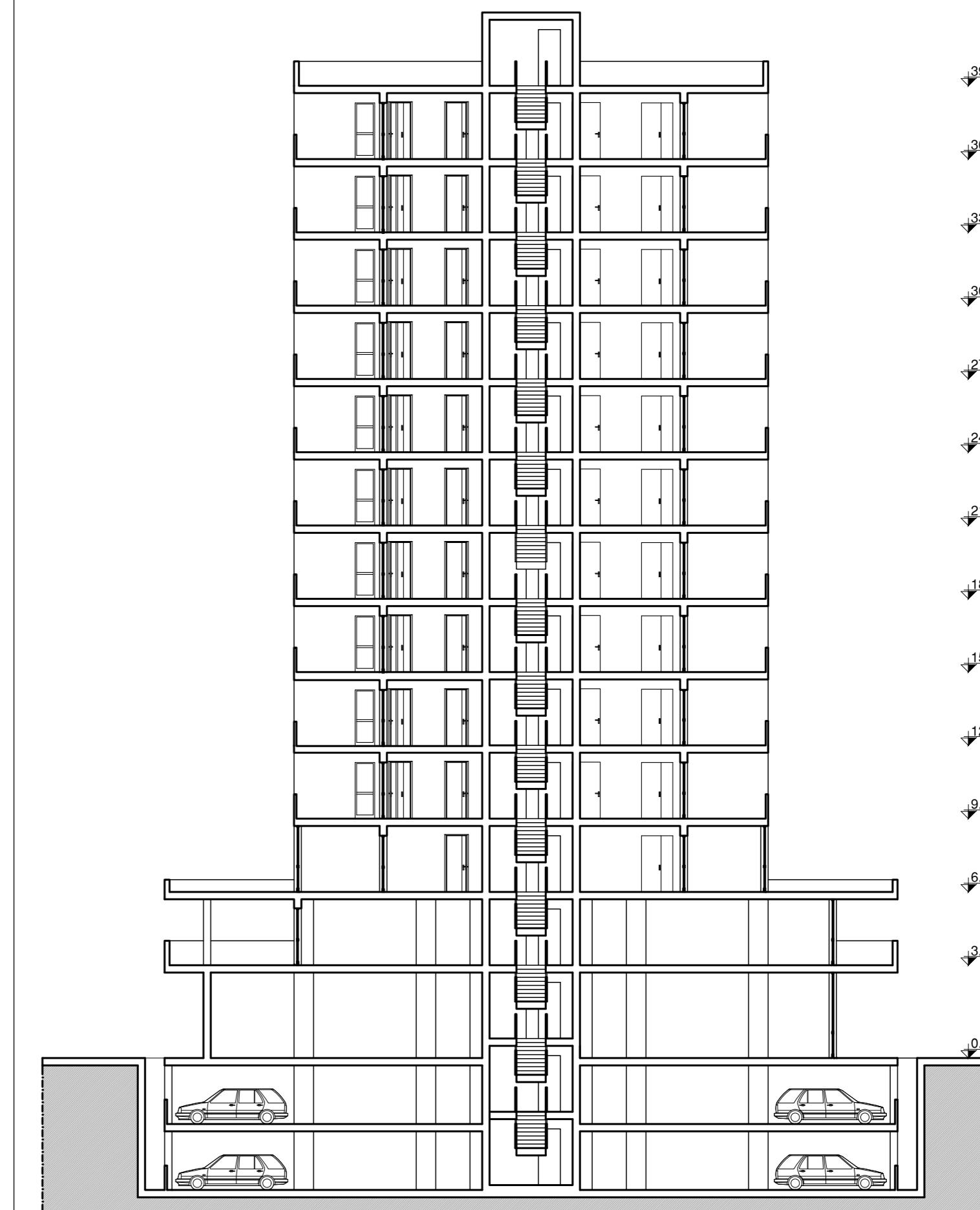


SEZIONE A-A'

TIPOLOGIA "TORRE"
PIANTA DEL PIANO TIPO IPOTESI 6 UNITÀ ABITATIVE - rapp. 1:200

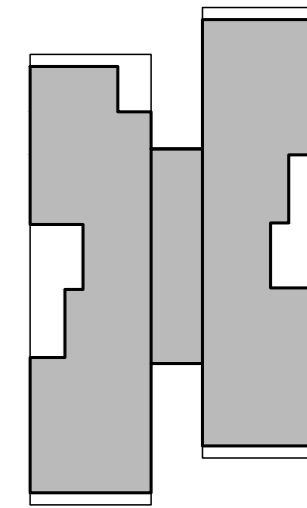


SUPERFICIE DI PIANO CIRCA 440 mq

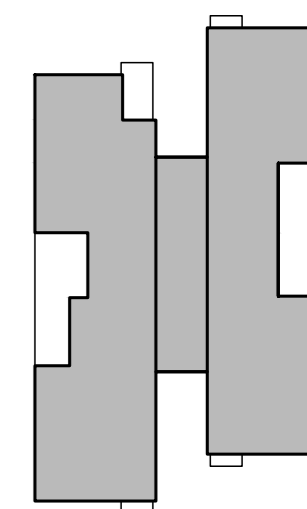


SEZIONE A-A'

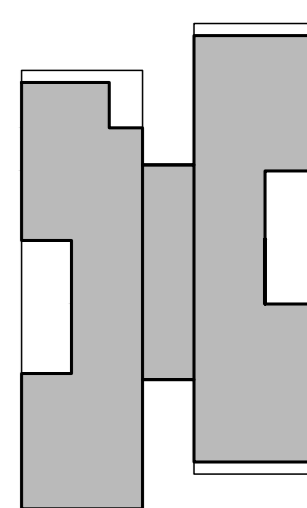
TIPOLOGIA "TORRE"
SCHEMI COMPOSITIVI PLANIMETRICI - rapp. 1:500



SUPERFICIE DI PIANO CIRCA 440 mq



SUPERFICIE DI PIANO CIRCA 440 mq



SUPERFICIE DI PIANO CIRCA 440 mq